

MONTHLY MEMBERSHIP PROGRESS REPORT

LOCATION NEW ZEALAND

District 202 M

Results as of: 1/31/2023

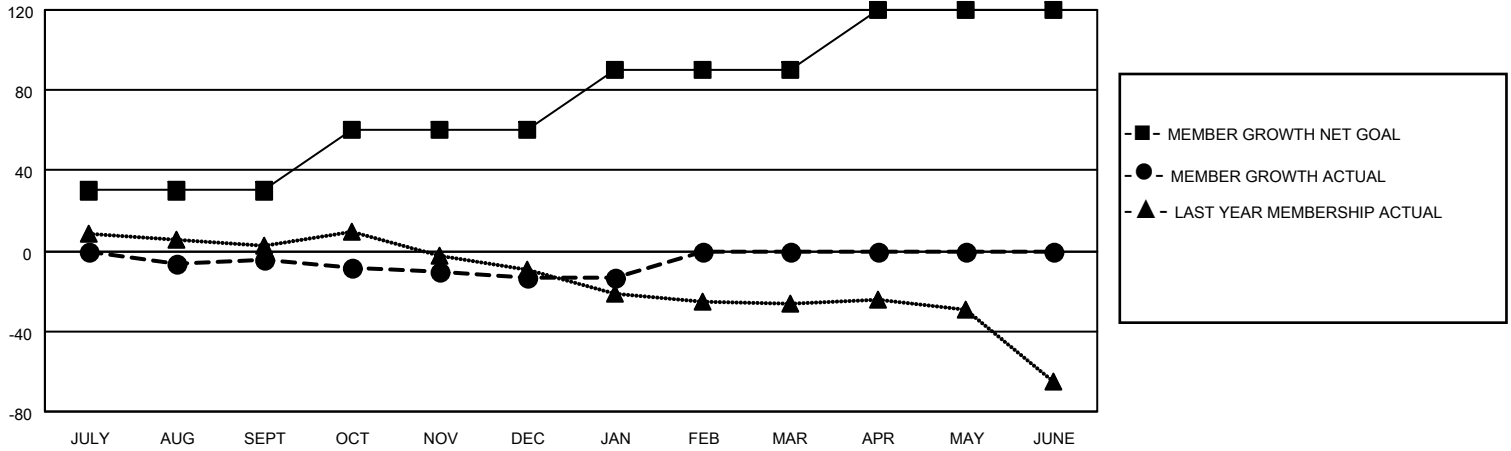
Clubs			
RESULTS FOR 2022-2023			
QUARTER	NEW CLUB GOAL	NEW CLUBS	DROPPED CLUBS
JULY/AUG/SEPT	0	0	2
OCT/NOV/DEC	0	0	0
JAN/FEB/MAR	0	0	0
APR/MAY/JUNE	0	0	0

Members			
RESULTS FOR 2022-2023			
QUARTER	MEMBER GROWTH NET GOAL	MEMBER GROWTH ACTUAL	DROPPED MEMBERS ACTUAL (including transfers)
JULY/AUG/SEPT	30	19	12
OCT/NOV/DEC	30	15	22
JAN/FEB/MAR	30	3	2
APR/MAY/JUNE	30	0	0

GOALS AND ACTUAL NEW CLUBS CUMULATIVE



GOALS AND ACTUAL MEMBERS CUMULATIVE



<p>DROPPED CLUBS: 2</p>	<p>15 CLUBS OF 41 ADDED 1 OR MORE NEW MEMBERS</p>	<p style="text-align: center;"><u>GENDER DISTRIBUTION</u></p> <p>MALE 564 (61.37%) FEMALE 355 (38.63%) NON BINARY 0 (0.00%) PREFER NOT TO ANSWER 0 (0.00%)</p>
<p><u>DROPPED MEMBERS</u></p> <p>DECEASED 9 CLUB CANCELLED 0 OTHER 29 TOTAL 38</p>	<p style="text-align: center;">CLICK HERE FOR CUMULATIVE MEMBERSHIP DATA</p>	<p>TOTAL FAMILY UNIT MEMBERS 80 FAMILY MEMBERS PAYING HALF DUES 40</p>